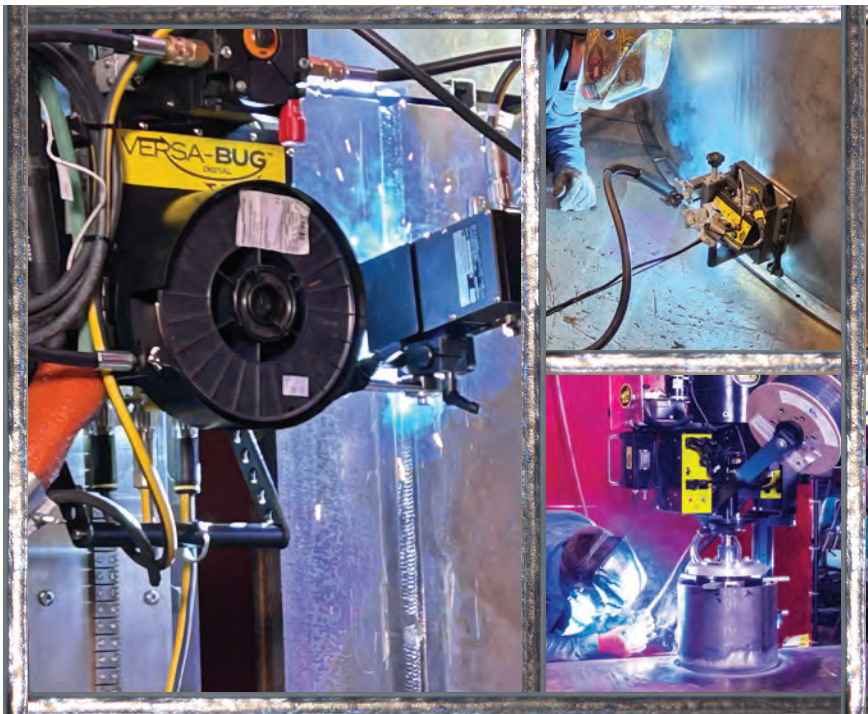


Operator Controlled Mechanization



Phone: 412-331-1776
sales@bugo.com

www.bugo.com

Bug-O Systems is committed to empowering our customers by providing operator controlled mechanized solutions for their welding, cutting and custom applications.

Why Choose a Mechanized Process?



Increase Production

The machine replaces the operator's hand to control the process. Continuous welding, no stopping and starting.

Improve Quality

Precise speed and path control improves appearance and quality. Decreases defects and costly repairs.



Reduce Material Handling

Take the machine to the work. Work in all positions.

Reduce Distortion

Regulate travel speed. Provide uniform heat input.



Improve Worker's Environment

Reduce operator fatigue. Remove operator from welding/cutting fumes.

For more detailed product information, please see our individual product brochures on our website: www.bugo.com

Track Cutting & Welding



GO-FER® IV

Straight line cutting machine for oxy-fuel or plasma. For straight line semi-automatic welding, a welding support kit is needed.

120 or 240 volt

Speed: 2.5-100 ipm
(6.35-254
cm/min)

Weight: 37 lbs. (16.8 kg)



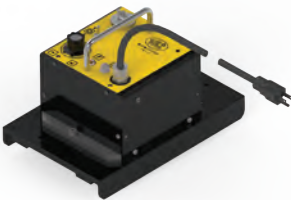
GO-FER® IV with Pendant

Straight line cutting machine for oxy-fuel or plasma. For straight line semi-automatic welding, a welding support kit is needed.

120 or 240 volt

Speed: 2.5-100 ipm
(6.35-254
cm/min)

Weight: 37 lbs. (16.8 kg)



DC-IV

Rack and pinion drive with six speed ranges available

Runs on aluminum rigid and semi-flex rail

120, 240 or 42 volt

Weight: 18 lbs. (8 kg)



DC-IV MAX

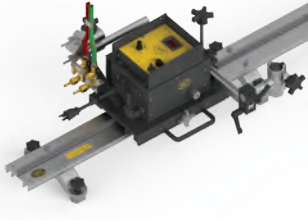
A turnkey solution for off-table, repeatable beveling and cutting

120 or 240 volt

Speed: 2.5-100 ipm
(6.4-254 cm/min)

Weight: 34.5 lbs. (15.6 kg)

Track Cutting & Welding



Modular Drive System

Straight Line Cutting Kit for oxy-fuel or plasma.
Adapts to all BUG-O rail.

120, 240 or 42 volt

Speed: 2-120 ipm
(5-304.8 cm/min)

Weight: 28 lbs. (12.7 kg) Vertical Load: 60 lbs. (27 kg)



Modular Drive System

Stitch Welding Kit: adapts to all BUG-O rail.

120, 240 or 42 volt

Speed: 2-120 ipm
(5-304.8 cm/min)

Weight: 30 lbs. (13.61 kg) Vertical Load: 60 lbs. (27 kg)



Modular Drive System

Linear Weaver Kit: adapts to all BUG-O rail.

120, 240 or 42 volt

Speed: 2-120 ipm
(5-304.8 cm/min)

Weight: 41 lbs. (18.6 kg) Vertical Load: 60 lbs. (27 kg)



Modular Drive System

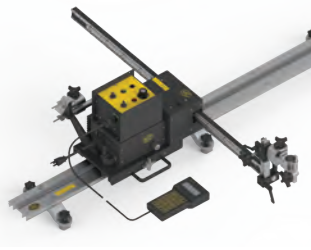
Pendulum Weaver Kit: adapts to all BUG-O rail.

120, 240 or 42 volt

Speed: 2-120 ipm
(5-304.8 cm/min)

Weight: 40 lbs. (18.14 kg) Vertical Load: 60 lbs. (27 kg)

Track Cutting & Welding



MDS Programmable Shape Kit

2 axis portable programmable cutting/welding machine. Options available for oxy-fuel or plasma.

120, 240 or 42 volt

Speed: 5-100 ipm

(12.7-254 cm/min)

Weight: 47 lbs. (21 kg)

Vertical Load: 60 lbs. (27 kg)



High Capacity Modular Drive System

Can carry up to 140 lbs. (64 kg) vertically, and is compatible with all standard MDS components

120, 240 or 42 volt

Speed: 2-120 ipm

(5-304.8 cm/min)

Weight: 26 lbs. (11.8 kg)



Beam Bug III

Portable machine to cut beams, channels and angles from one rail setting

120 or 240 volt

Speed: 2-50 ipm

(5-127 cm/min)

Weight: 37 lbs. (17 kg)

Track Welding

Modular Drive System



A versatile machine that can be customized for pipe welding or cutting. Adapts to all BUG-O rail.

120, 240 or 42 volt

Speed: 2-120 ipm

(5-304.8 cm/min)

Weight: 39 lbs. (17.5 kg)

Vertical Load: 60 lbs. (27 kg)



Modular Drive System with Automatic Height Control

Available for straight-line or linear & pendulum weaving systems. Adapts to all BUG-O rail.

120, 240 or 42 volt

Speed: 2-120 ipm

(5-304.8 cm/min)

Weight: 45 lbs. (20 kg)

Vertical Load: 60 lbs. (27 kg)



Zipper Welder

Designed to weld vertical seams on field storage tanks

The system hooks on the top edge of the tank and manually rolls to the next joint

Options are available with a pendulum or linear weaver

120 or 240 volt

Speed: 2-120 ipm

(5-304.8 cm/min)

Weight: 120 lbs. (54.43 kg)

Vertical Load: 60 lbs. (27 kg)

Track Welding



Universal Bug-O-Matic

Compact drive and weaver combination. Adapts to all BUG-O rail.

120, 240 or 42 volts	Weight: 28 lbs. (13 kg)
Speed	
Linear: 3-70 ipm 7.62-177.8 cm/min.	Weave: 4-100 ipm (10.16- 254 cm/min)



Universal Bug-O-Matic with Auto Height Control

An excellent choice for pipe welding for ease of operation

120, 240 or 42 volts	Weight: 36 lbs. (16 kg)
Speed	
Linear: 3-70 ipm 7.62-177.8 cm/min.	Weave: 4-100 ipm (10.16- 254 cm/min)



Versa-Bug

Digital bug that combines smart motor with common power and communication cables via Ethercat. PLC controller provides precise digital control. Includes linear weaver and slide for 3-axis motion control.

120/240V, 50/60HZ input	
Speed	
Linear: 0-80 ipm 0-203 cm/min.	Weave: 5-130 ipm (12.7-330.2 cm/min)
Weight: 47 lbs. (21.32 kg)	



Pipe Welding Systems - Piper-Plus

Self contained, digitally controlled - produces excellent quality repeatable welds with high deposition rates. Fully integrated with power sources - advanced process control available (STT, GMAW-P, etc)

Pipe diameter 12" (304.8 mm) and larger	Air-cooled & Water-cooled options
120 or 240 volts	Weight: 47.56 lbs. (20.72 kg)
Speed	
Linear: 0-80 ipm 0-203 cm/min.	Weave: 5-130 ipm (12.7-330.2 cm/min)

Trackless Welding



Uni-Bug® III

Programmable stitch welder, runs directly on the work piece.

Carriage options for the following structural profiles:

- Bulb Angle
- T Profiles
- L Profiles

120, 240 or 42 volt

Speed: 4-75 ipm

(10-191 cm/min)

Weight: 20 lbs. (9 kg)



K-BUG 1200

Fillet welder with continuous and programmable stitch.

120, 240 or 42 volt

Speed: 1.5-37 ipm

(3-95 cm/min)

Weight: 13 lbs. (5.9 kg)



K-BUG 1200-BAT

Fillet welder with continuous and programmable stitch.

120, 240 or 42 volt

Speed: 1.5-37 ipm

(3-95 cm/min)

Weight: 17 lbs. (7.71 kg)



K-BUG 2000

Dual torch fillet welder

120, 240 or 42 volt

Speed: 0.3-37 ipm

(0.1-95 cm/min)

Weight: 23.2 lbs. (10.5 kg)

Trackless Welding



K-BUG 3000 with Oscillation

Welds in all positions and includes wireless remote.

120 or 240 volt

Speed: 1.18-35 ipm
(3.0-88 cm/min)

Weight: 20.2 lbs. (9.2 kg)



K-BUG 3000-BAT with Oscillation

Cordless, battery operated, welds in all positions and includes wireless remote

120 or 240 volt

Speed: 1.18-35 ipm
(3.0-88 cm/min)

Weight: 26 lbs. (11.8 kg)



K-BUG 3500

Utilized in conjunction with K-BUG guide rail to weld butt joints.

120 or 240 volt

Speed: 1.18-35 ipm
(3.0-88 cm/min)

Weight: 28.88 lbs. (13.10 kg)



K-BUG 4000

Wall following continuous and stitch fillet welder

120, 240 or 42 volt

Speed: 0.3-77 ipm
(0.76-196 cm/min)

Weight: 17 lbs. (7.5 kg)



Stiffener Welders

Mechanizes two wire feeders to weld various types of stiffeners. Available with Lincoln® Flex Feed 84 feeder or Miller® S74 feeder.

120 or 240 volt

Speed: 3-44 ipm
(8-112 cm/min)

Circle Welding



Circle Welders

Nozzle welding units available for MIG/MAG and submerged arc Multiple versions available for nozzle diameters of 1"-50" (25-1270 mm).

For multi-pass and multi-layer welding



Mini Circle Welder

Weld nozzles or tube sheet

Operates with 18 volt, 4.0Ah rechargeable battery

Charger: 120 or 240 volt 1.18"-3.94" (30-100 mm) dia.

Weight: 17.12 lbs (7.8 kg) Speed: 0-185 ipm
0-471 cm/min

Circle Cutting



HOB-O® All Position Hole Borer

Lightweight precision hole borer, beveler and welder
120, 240 or 42 volt Cutting Dia.: 1"-48"
(25-1220 mm)

Weight: 30 lbs. (13.6 kg)



CB-1PR

Plasma circle burner w/remote control for cutting beveled holes 1/2"-12" (13-305 mm) in pipe up to 3/8" (7 mm) wall thickness

60% Duty cycle

Rise & Fall Cam: 5" (127 mm)

Speed: 0.2-11 rpm

Weight: 170 lbs. (77 kg)



CB-2

Circle burner with magnetic base. Process: Oxy-fuel
Cutting Diameter:

1.5"-42" (40-1067 mm) beveled holes

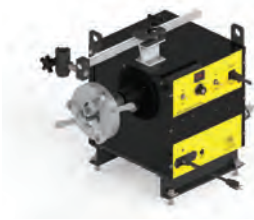
4"-48" (102-1219 mm) square cut

Rise and Fall Cam: 0-7" (0-175 mm)

Weight: 225 lbs. (102 kg)

Speed: 0.1-2 rpm

Pipe Cutting & End Preparation



PCC-3

Pipe Coupon Cutter is a single axis machine for cutting or beveling the edge of a pipe.

Process: Oxy-fuel or Plasma

Dual voltage: 120/240 VAC

0-8" (3.1cm) O.D., 3-11" (1.2-4.3 cm) I.D.

Weight: 180 lbs. (82 kg)

Variable Speed: 0-4.5 rpm



SE-2 PTD

Programmable pipe cutter with 5" (127 mm) pipe pass through capability.

Process: Oxy-fuel/Plasma 120 or 240 volts

Diameters: 1" - 4" (25-100 mm)

External Chuck: 4"-14" (100-355 mm)

Weight: 345 lbs. (157 kg) Speed: 0.3-3.75 rpm



SE-4PD

Programmable pipe cutter

Process: Oxy-fuel or Plasma 120 or 240 volts

Cutting Diameters: 1"-12" (25-300 mm)

Maximum Pipe Length: 8" (450 mm)

Weight: 200 lbs. (91 kg) Speed: 0.2-3.7 rpm



SE-4PTD

Programmable pipe cutter with 13" (330 mm) pipe pass through capability.

Process: Oxy-fuel/Plasma 120 or 240 volts

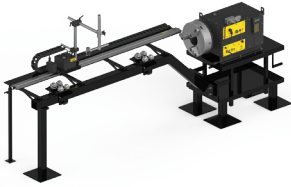
Pass Through Pipe Cutting

Diameters: 4" to 12-3/4" (100-325 mm)

External Chuck up to 20" (500 mm)

Weight: 705 lbs. (320 kg) Speed: 0.2-3 rpm

Pipe Cutting & End Preparation



MM-1

Programmable pipe cutter with pipe bed
 Process: Oxy-fuel/Plasma 120 or 240 volts
 Cutting Diameters: 4"-16" (100-400 mm) O.D.
 Pipe Length Capacity: up to 30' (9.14 m)
 24" (600 mm) Diameter Capacity Available
 Weight: 1,000 lbs. (454 kg) Speed: 0-3 rpm

Capabilities of Bug-O Pipe cutting & end preparation units. Pre-programmed and custom cuts.

<p>TYPE 1</p> <p>Saddle Nozzle Cuts</p>	<p>TYPE 4</p> <p>Miter Cut</p>
<p>TYPE 2</p> <p>Offset Saddle Nozzle Cuts (Hillside)</p>	<p>TYPE 5</p> <p>Hole Cutting at Various Angles</p>
<p>TYPE 3</p> <p>Lateral Nozzle Cuts</p>	<p>Shape Program Custom Irregular Shapes</p>

Custom Mechanization



Universal Girth Welders

These girth welders are convertible for both bottom up and top down construction.

They are also capable of being used as a pair to construct a dual sided girth welder.

Special models can be built per customer's request.



Vertical Seam Welder

Similar design to BGW

Performs vertical seam welds

Includes elevating platform for operator



Mini Portable Automatic Girth Welder

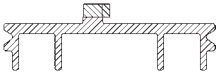
Produces 2G horizontal sub-arc welds

Runs on a steel band support located anywhere on the work piece.

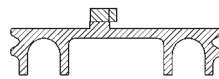
Accessories

Rails

Rigid Rails



Heavy Duty
ARR-1085
4' (1.18 m) Long
ARR-1080
8' (2.37 m) Long



Extra Heavy Duty
ARR-1200
4' (1.18 m) Long
ARR-1250
8' (2.37 m) Long

Hard coat rails for above available upon request.



Heavy Duty Rail
For Versa-Bug
ARR-1085-CS
4' (1.18 m) Long
ARR-1080-CS
8' (2.37 m) Long



Hi-Flex Rail
Flexes to 30"
(760 mm) radius
FMD-1050
57.7" (1.47 m)
Long



Semi-Flex Rail
Flexes to
15' (5 m) radius
AFR-3000
8' (2.37 m) Long



**Hi-Flex Rail with
8 - R.E. On/Off
Magnets**
Flexes to 30"
(760 mm) radius
FMD-2170



K-BUG Guide Rail
For use with
K-BUG guide rail
accessory kits
100-0902
6' (1.83 m) Long
with on/off magnets



Bent Rigid Rail
Minimum work
diameter of 9"
(230 mm)
BRR-

Rapid Installation Rail



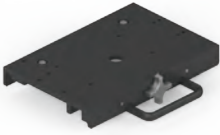
Ring Rail
Minimum work
diameter of 12"
(304.8 mm)



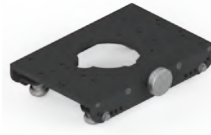
Piper Steel Rail
Minimum work
diameter of 12"
(304.8 mm)

Accessories

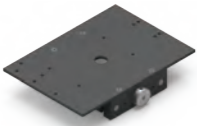
Carriages



Releasable Carriage
For Rigid & Semi-Flex Rail
MPD-1065



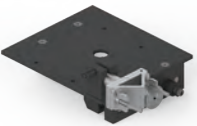
Split Carriage Releasable from Rail
For Bent Rigid Rail
BUG-5910



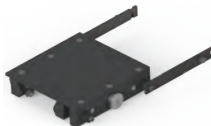
Hi-Flex Carriage
For Universal Bug-O-Matic
FMD-1022



12" Hi-Flex Carriage
For Hi-Flex Rail
FMD-1105



Hi-Flex Carriage
For Hi-Flex Rail
FMD-1100



FMD Long Trailer
For Hi-Flex Rail
FMD-1090



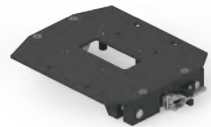
FMD Short Trailer
For Hi-Flex Rail
FMD-1095



12" Carriage
For DC-IV and DC-IV MAX
BUG-5250



BRR Carriage w/Cam Handle
BUG-5960



PSR II Carriage
For Versa-Bug with Piper Rail
100-0776

Accessories

Magnet/Support Bars



R.E. On/Off Magnet
For Alum. Rigid Rail
ARM-2010

High Heat Applications*
ARM-2010-HH2



R.E. On/Off Magnet
For Versa-Bug with
Alum. Rigid Rail
ARM-2010-CS



Swivel Magnet
For Aluminum
Rigid Rail
ARM-2325



**R.E. On/Off
Pivot Magnet**
For Aluminum
Rigid Rail
ARM-2020
ARM-2020-400



**Fixed Magnet
Plate w/Release**
For Aluminum
Rigid Rail
ARM-2265



**Magnet Plate,
Short**
For Aluminum
Rigid Rail
ARM-2248



R.E. On/Off Magnet
For Semi-Flex Rail
AFR-2010

High Heat Applications*
AFR-2010-HH2



R.E. On/Off Magnet
For Versa-Bug with
Semi-Flex Rail
AFR-2010-CS



Magnet w/Release
For Semi-Flex Rail
ARM-2425



**Fixed Magnet
Plate w/Release**
For Semi-Flex Rail
ARM-2465



**R.E. On/Off
Magnet**
For Hi-Flex Rail
FMD-2010

High Heat Applications*
FMD-2010-HH2



Magnet w/Release
For Hi-Flex
FMD-2325

*High Heat App. = Rated @ 180°C (356°F)
Standard Heat = Rated @ 80°C (176°F)

Accessories

Magnet/Support Bars



Support Bar with Screw Feet
For Bent Rail
4.5" (114.3 mm)
of adjustment
ARM-2380



Adjustable R.E. On/Off Magnet
For Bent Rigid Rail
BRR-2010



Support Bar with Screw Feet
For Bent Rigid Rail
ARM-2380-CS



Piper Flex Magnet
For Piper Flex Rail
PSR-2210



Support Bar with Screw Magnet Feet
For Rigid Ring Rail
ARM-2480



Support Bar with Screw Magnet Feet
For Bent Rigid Rail
ARM-2480-CS



Support Bar with R.E. On/Off Magnets
For Bent Rail 3.5"
(88.9 mm) of
adjustment
ARM-2580



Support Bar with Screw and Magsquare Feet
For Bent Rigid Rail
ARM-2580-CS

Accessories

Non-Ferrous

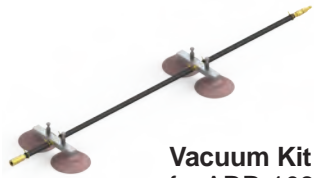


Vacuum Pump Kit

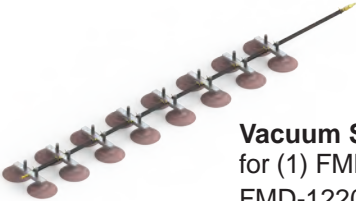
100-1297-120
110 volt/50-60 Hz
100-1297-240
240 volt/50-60 Hz



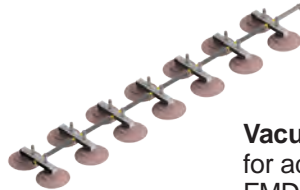
Vacuum Kit for
ARR-1085 Rigid Rail and
AFR-3000 Semi-Flex Rail
ARV-1080



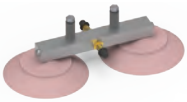
Vacuum Kit
for ARR-1085
Rigid Rail
ARV-1085



Vacuum Support
for (1) FMD-1050
FMD-1220



Vacuum Support
for additional
FMD-1050
FMD-1230



**Vacuum Bar
Assembly**
For non-ferrous
material
For Hi-Flex Rail
(sold separately)
FMD-1036



**Vacuum Bar
Assembly**
For non-ferrous
material
For Rigid & Semi-
Flex Rails
(sold separately)
ARV-1036

Accessories

Automatic Height Control



Hall Effect Current Sensor Assembly
(Included in All AHC Systems)
CAS-1550



AHC for Universal Bug-O-Matic
BUG-6553



AHC for Free Standing Torch Support Integration
CAS-2100 120 VAC
CAS-2102 240 VAC
CAS-2104 42 VAC



AHC for MDS Pendulum Weaver System
CAS-2060



AHC for MDS Linear Weaver System or MDS Straight Line System
CAS-2050

Plasma Height Control



Volt Sensor Assembly
(Included in All Plasma Height Control Systems)
AVC-1550-PL-XX*



Height Slide Assembly 18"
CAS-1500-18



For Stand Alone Plasma Height Control
120, 240 or 42 volt
AVC-2100-PL-XX*



AHC for MDS Pendulum Weaver System
AVC-2060-PL-XX*



AHC for MDS Linear Weaver System or MDS Straight Line System
AVC-2050-PL-XX*

*XX = is the volt sensor option:

ID for use with Internal Divider

RV for use with Raw Voltage of blowback start type sources

PS for installation inside the Power Source for HF or capacitive discharge type sources

Accessories

Torch Supports

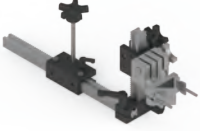


**Welding Support
Kit for
GO-FER® IV
GOF-3255**



**Torch Incline
CAS-2200**

Racking Groups



**Machined Rack
Welding Group
MDS-1040**



**Machined Rack
Cutting Group
MDS-1050**



**Dual Torch
Welding Group
MDS-1075**



**Dual Torch
Cutting Group
MDS-1090**

Panographs



**Panograph
Torch Floater
PAN-1000**



**Welding
Panograph
PAN-1008**



**Double Torch Panograph
PAN-1072**



**Mechanical
Corner Follower
PAN-2145-L, R**



**Mechanical
Seam Follower
PAN-2160**

Accessories

Heavy Duty Tool Positioning



**Heavy Duty
Welding Group**
BUG-5275



**Heavy Duty All
Position Cutting
Group**
BUG-5185



**Extra Heavy
Duty Racking Kit**
100-0442-XX



**Heavy Duty
Cutting Group**
BUG-5285

Fixturing Equipment



Freestanding Torch Support
Manually Operated
FTS-1020



**Freestanding Torch Support
with Automatic Height Control**
FTS-1025 (120 VAC)
FTS-1025-240 (240 VAC)



Mini Manipulator
BUG-1965 (120 VAC)
BUG-1966 (240 VAC)
BUG-1967 (42 VAC)

Accessories

Push/Pull Gun Adapters

(For MILLER® Products)

Requires a 100-0771-15 or 100-1771-25 Weld Contact Cable.



Trigger Adapter Assembly, Push/Pull

Uses a 10-pin position connector with pins labeled A-J.

Uses a 2 position Amphenol with pins labeled A&B for Weld Contact triggering.

100-0768*



Trigger Adapter Assembly, Push/Pull

Uses a 14-pin position connector with pins labeled 1-14.

Uses a 2 position Amphenol with pins labeled A&B for Weld Contact triggering.

100-0790*

* Requires a 100-0771-15 or 100-1771-25 Weld Contact Cable

All-In-One (AIO) Mechanized Guns



All-In-One (AIO) Gun combines your torch and power cables into one clean, organized setup.

AIO Guns available for:

- Modular Drive System / Go-fer with PC Style Power Cord
- Uni-bugs and Universal Bug-O-Matic
- KBUGs

Call Factory for Details.